

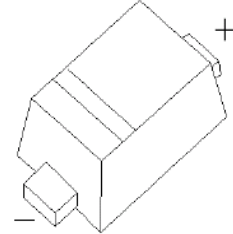


## RB521S-30 Schottky barrier Diode



### FEATURE

- Small surface mounting type
- Low reverse current and low forward voltage
- High reliability



MARKING: C

SOD-523

### Maximum Ratings and Electrical Characteristics, Single Diode @Ta=25°C

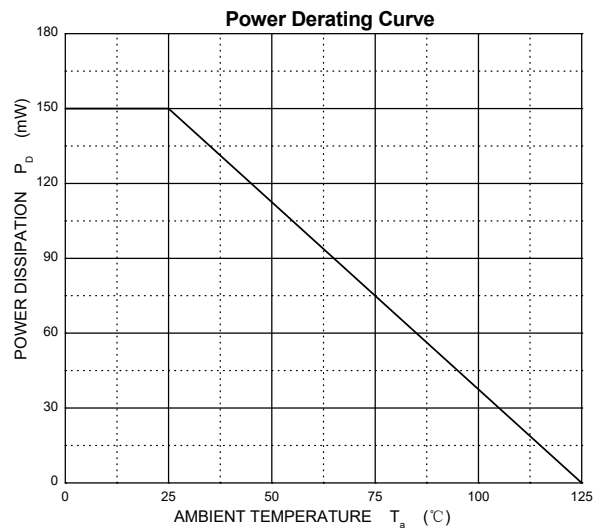
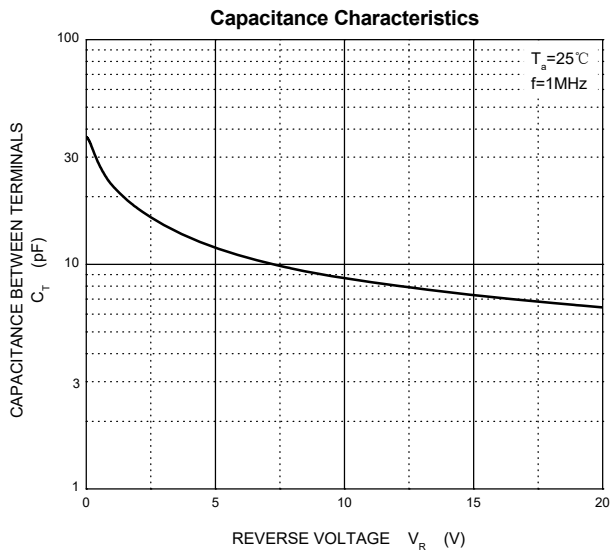
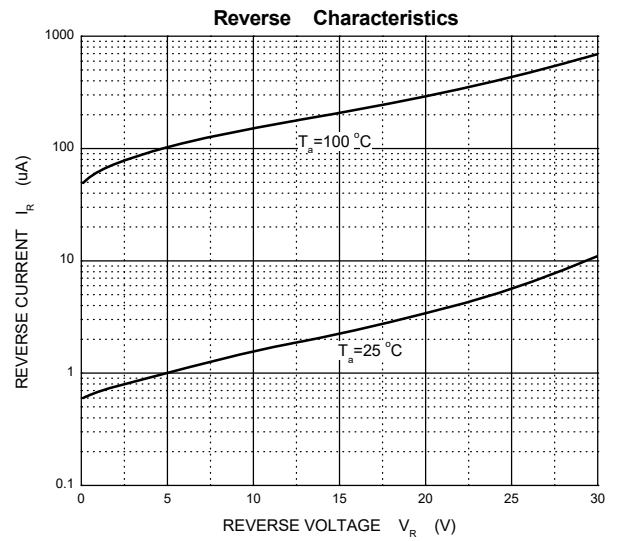
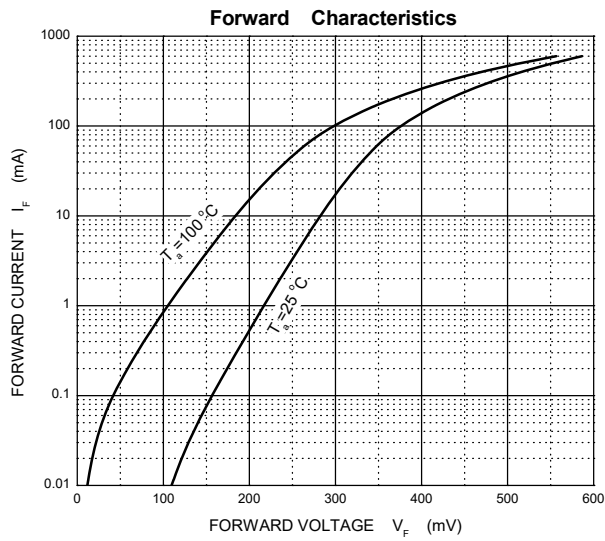
| Parameter   | Symbol          | Limit      | Unit |
|---|-----------------|------------|------|
| DC reverse voltage                                  | $V_R$           | 30         | V    |
| Mean rectifying current                             | $I_O$           | 200        | mA   |
| Non-repetitive Peak forward surge current @ t=8.3ms | $I_{FSM}$       | 1          | A    |
| Power dissipation                                   | $P_D$           | 150        | mW   |
| Thermal Resistance Junction to Ambient              | $R_{\theta JA}$ | 667        | °C/W |
| Operating Junction Temperature Range                | $T_j$           | -40 ~ +125 | °C   |
| Storage Temperature Range                           | $T_{stg}$       | -55 ~ +150 | °C   |

### Electrical Ratings @Ta=25°C

| Parameter       | Symbol   | Min | Typ | Max  | Unit    | Conditions  |
|-----------------|----------|-----|-----|------|---------|-------------|
| Forward voltage | $V_{F1}$ |     |     | 0.35 | V       | $I_F=10mA$  |
|                 | $V_{F2}$ |     |     | 0.6  | V       | $I_F=200mA$ |
| Reverse current | $I_R$    |     |     | 30   | $\mu A$ | $V_R=10V$   |



## Typical Characteristics

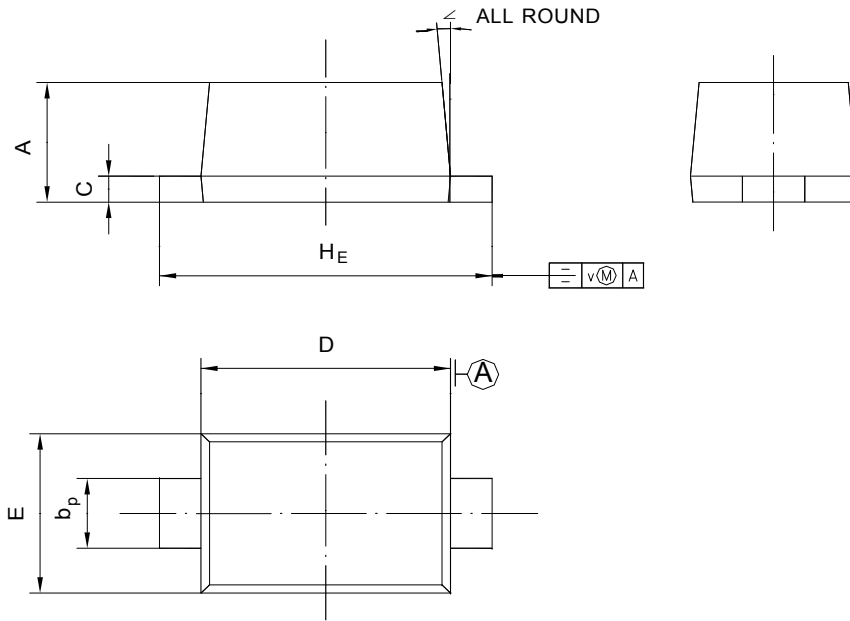




## PACKAGE OUTLINE

Plastic surface mounted package; 2 leads

SOD-523



| UNIT | A    | b <sub>p</sub> | C     | D    | E    | H <sub>E</sub> | V   | ∠  |
|------|------|----------------|-------|------|------|----------------|-----|----|
| mm   | 0.68 | 0.4            | 0.135 | 1.25 | 0.85 | 1.7            | 0.1 | 5° |
|      | 0.58 | 0.3            | 0.100 | 1.15 | 0.75 | 1.5            |     |    |